

Hazard-Gard EVMA HID floodlights

Cl. I, Div. 1 & 2, Groups B (with suffix GB), C, D
Cl. I, Zone 1

Marine & Wet Locations
IP66

5L

Applications:

Hazard-Gard® floodlights with trunnion arm (suffix S812) and EV912 high bay reflector are used in:

- Heavy process industries where flammable or explosive vapors or gases are present
- Hazardous areas, both indoors and outdoors, where long life and low maintenance costs are desired
- Petroleum refineries, chemical, petrochemical and other heavy process industry facilities
- Hazardous locations requiring elevated ambient capability
- For mounting to a wall or structure

Features:

- Luminaire is factory wired; power is fed through “wireless” connection block which serves as a mechanical seal between conduit and ballast compartments, eliminating the need for an external, field installed seal; the result is fast, easy installation
- High bay reflectors of Alzak aluminum
- Internally fluted glass globes reduce glare and provide comfortable viewing light
- Wide range of light sources and wattages to meet specific lighting needs – 50, 70, 100, 150, 200, 250 and 400W high pressure sodium (HPS); 70, 100, 175, 250 and 400W metal halide (MH)
- High power factor (90%+) ballasts reduce power costs – allow more luminaires per circuit
- Elevated ambient capability permits reliable operation at high ambient temperature; selected luminaires are suitable for ambient temperatures up to 65°C
- Integral ballasts – separate ballasts are not required; lowest installed cost
- Factory sealed, porcelain, mogul base socket
- The trunnion arm gives you the ability to offer a Hazard-Gard floodlight with varying degrees of adjustability between -90° and +90°
- When mounting on a wall, there are numerous mounting arrangements – due to the pre-drilled openings in the wall bracket

Certifications and compliances:

NEC/CEC:

- Class I, Divisions 1 & 2, Groups B (with suffix GB), C, D

UL standards:

- UL844
- UL595

CSA standard:

- C22.2 No. 137

Standard materials:

- Mounting module, cover, ballast housing, guard and globe ring – copper-free aluminum
- Globe – heat- and impact-resistant glass
- Exterior hardware – stainless steel
- Lamp socket – porcelain with stainless steel screw shell
- High bay reflector – Alzak aluminum

Standard finishes:

- Copper-free aluminum – epoxy powder coat
- Alzak – natural (anodized)

Ordering information:

(Catalog number includes guard, trunnion arm and high bay reflector)

Cat. #	Watts	Hub size
High pressure sodium		
EVMA42051/volts S812 EV3912	50	3/4"
EVMA42071/volts S812 EV3912	70	3/4"
EVMA42101/volts S812 EV3912	100	3/4"
EVMA42151/volts S812 EV3912	150	3/4"
EVMA42201/volts S812 EV3912	200	3/4"
EVMA42251/volts S812 EV3912	250	3/4"
EVMA42401/volts S812 EV3912	400	3/4"
Metal halide		
EVMA92071/volts S812 EV3912	70	3/4"
EVMA92101/volts S812 EV3912	100	3/4"
EVMA92171/volts S812 EV3912	175	3/4"
EVMA92251/volts S812 EV3912	250	3/4"
EVMA92401/volts S812 EV3912	400	3/4"

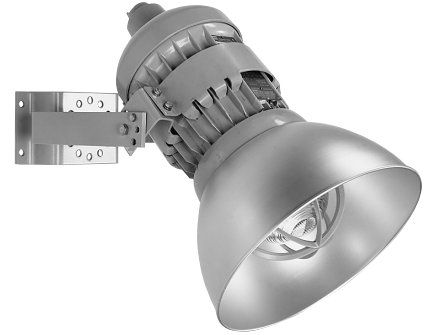
Note: Replace 'volts' in catalog number with suffix from voltage suffix tables below.

Standard voltage ballasts – 60 Hz

NEC/UL				CEC/CSA (cUL)			
Voltage Suffix	Multi-tap /MT	Dual-tap /DT	120V /120	480V /480	Tri-tap /TT	Dual-tap /DT	120V /120

Optional voltage ballasts – 50 or 60 Hz

CEC/CSA (cUL) – CWI isolated ballasts				Export			
Voltage Suffix	208V CWI /208 CWI	240V CWI /240 CWI	600V CWI /600 CWI	220V 60 Hz /220	220V 50 Hz /220 50	230V 50 Hz /230 50	240V 50 Hz /240 50



Electrical ratings:

- 120, 208, 240, 277, 347, 480, 600V, multi-tap^A
- 50-400W

Photometrics:

- Refer to www.eaton.com (under the Resources tab of each product family) for specific photometric IES files

^A CSA certified luminaires are not available with multi-tap ballast or S658 fuse option.

Hazard-Gard EVMA HID floodlights

Cl. I, Div. 1 & 2, Groups B (with suffix GB), C, D
Cl. I, Zone 1

Marine & Wet Locations
IP66

5L

Options:

- | Description | Suffix |
|--|-------------|
| • Fused..... | S658 |
| <i>Not suitable for marine applications</i> | |
| • Ballast-Gard..... | BG |
| <i>Available with 50-400W HPS only</i> | |
| • Instant restrike..... | IR |
| <i>Cannot be used with BG or QTZ options</i> | |
| <i>Available with 50-150W LX HPS only</i> | |
| • Quartz auxiliary lighting..... | QTZ |
| <i>Not available with 400W MH</i> | |
| <i>Uses 100W single-ended lamp</i> | |
| <i>Lamp not included</i> | |
| • Group B suitability | GB |

Required accessories:

EABC



Cat. #	Hub size
EABC26	3/4"

UNL (90° angle)



Cat. #	Size
UNL205	3/4" to 3/4"

ECGJH



Cat. #	Flexible length	Size
ECGJH230	30"	3/4"

Temperature performance data:

Hazard-Gard luminaire with trunnion arm (suffix S812)

Watts	Maximum ambient temperature		
	Class I		
	40°C	55°C	65°C
High pressure sodium			
50	T4	T4	T3C
70	T4	T4	T3C
100	T4	T4	T3C
150	T4	T4	T3C
200	T3A	-	-
250	T3A	-	-
400	T3A	-	-
Metal halide			
70	T3	T3	-
100	T3	T3	-
175	T3	T3	-
250	T3	T3	-
400	T2D	-	-

Note: See Section 3L for additional luminaire information.

5L