

Weatherproof outlet boxes

Single-gang

Applications:

- For use as a weatherproof junction box or device housing in damp or wet locations when combined with weatherproof cover

Features:

- Durable die cast aluminum construction for long product life
- Powder paint finish for corrosive environments
- Pre-installed ground screw
- Tapered NPT hubs
- Includes mounting hardware, lugs and closure plugs

Certifications and compliances:

- UL File No. E-121488
- CSA C22.2 No. 18
- Complies with NEC Article 406.9(B)(1)
- NEMA 3R

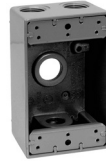


Standard material:

- Die cast aluminum



TP7010 - TP7018



TP7026, TP7034



TP7042, TP7050



TP7058, TP7066

SINGLE-GANG - 2" DEEP WITH LUGS

Cat. #	Outlet holes	Cubic inches	Color	Unit qty.	Wt. lbs. per 100
TP7010	3 - 1/2"	18.3	Gray	50	53.5
TP7010BULK	3 - 1/2"	18.3	Gray	50	53.5
TP7011	3 - 1/2"	18.3	White	50	53.5
TP7012	3 - 1/2"	18.3	Bronze	50	53.5
TP7018	3 - 3/4"	18.3	Gray	50	53.6
TP7019	3 - 3/4"	18.3	White	50	53.6
TP7020	3 - 3/4"	18.3	Bronze	50	53.6
TP7026	4 - 1/2"	17.0	Gray	50	55.9
TP7027	4 - 1/2"	17.0	White	50	55.9
TP7028	4 - 1/2"	17.0	Bronze	50	55.9
TP7034	4 - 3/4"	18.3	Gray	50	53.9
TP7035	4 - 3/4"	18.3	White	50	53.9
TP7036	4 - 3/4"	18.3	Bronze	50	53.9
TP7042	5 - 1/2"	18.3	Gray	50	56.0
TP7050	5 - 3/4"	17.0	Gray	50	55.5
TP7058	5 - 1/2" (side entry)	18.3	Gray	50	57.3
TP7066	5 - 3/4" (side entry)	18.0	Gray	50	53.9



TP7074, TP7078, TP7082

SINGLE-GANG - 2-5/8" DEEP WITH LUGS

Cat. #	Outlet holes	Cubic inches	Color	Unit qty.	Wt. lbs. per 100
TP7074	3 - 1/2"	25.5	Gray	25	64.3
TP7075	3 - 1/2"	25.5	White	25	64.3
TP7076	3 - 1/2"	25.5	Bronze	25	64.3
TP7078	3 - 3/4"	25.5	Gray	25	64.6
TP7082	3 - 1"	23.0	Gray	25	72.8

Weatherproof

Weatherproof outlet boxes

Two-gang and three-gang

Applications:

- For use as a weatherproof junction box or device housing in damp or wet locations when combined with weatherproof cover

Features:

- Durable die cast aluminum construction for long product life
- Powder paint finish for corrosive environments
- Pre-installed ground screw
- Tapered NPT hubs
- Includes mounting hardware, lugs and closure plugs

Certifications and compliances:

- UL File No. E-121488
- CSA C22.2 No. 18
- Complies with NEC Article 406.9(B)(1)
- NEMA 3R



Standard material:

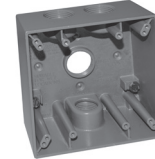
- Die cast aluminum



TP7086 - TP7090



TP7093



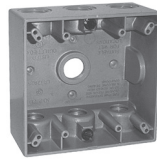
TP7094, TP7098



TP7102, TP7106



TP7118, TP7122



TP7110, TP7114



TP7125



TP7128

TWO-GANG - 2" DEEP

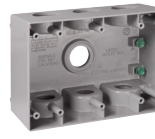
Cat. #	Outlet holes	Cubic inches	Color	Unit qty.	Wt. lbs. per 100
TP7086	3 - 1/2"	30.2	Gray	10	84.7
TP7087	3 - 1/2"	30.2	White	10	84.7
TP7088	3 - 1/2"	30.2	Bronze	10	84.7
TP7090	3 - 3/4"	30.2	Gray	10	83.6
TP7093	3 - 1"	31.0	Gray	10	87.5
TP7094	4 - 1/2"	30.2	Gray	10	82.0
TP7098	4 - 3/4"	30.2	Gray	10	83.9
TP7102	5 - 1/2"	30.2	Gray	10	80.2
TP7103	5 - 1/2"	30.2	White	10	80.2
TP7104	5 - 1/2"	30.2	Bronze	10	80.2
TP7118	5 - 1/2" (side entry)	31.0	Gray	10	83.1
TP7106	5 - 3/4"	30.2	Gray	10	79.8
TP7122	5 - 3/4" (side entry)	31.0	Gray	10	81.4
TP7110	7 - 1/2"	30.3	Gray	10	78.4
TP7125	7 - 1/2" (side entry)	31.0	Gray	10	80.2
TP7114	7 - 3/4"	30.2	Gray	10	73.3
TP7128	7 - 3/4" (side entry)	31.0	Gray	10	81.4



TP7126, TP7130, TP7134



TP7137, TP7138, TP7142



TP7143



TP7144

TWO-GANG - 2-3/8" DEEP

Cat. #	Outlet holes	Cubic inches	Color	Unit qty.	Wt. lbs. per 100
TP7126	5 - 1/2"	36.0	Gray	6	102.6
TP7130	5 - 3/4"	36.0	Gray	6	95.2
TP7134	5 - 1"	36.0	Gray	6	104.2
TP7137	7 - 1/2" (side entry)	36.0	Gray	6	95.5
TP7138	7 - 3/4" (side entry)	36.0	Gray	6	95.2
TP7142	7 - 1" (side entry)	36.0	Gray	6	107.3

THREE-GANG - 2-3/8" DEEP

Cat. #	Outlet holes	Cubic inches	Color	Unit qty.	Wt. lbs. per 100
TP7143	7 - 3/4"	55.0	Gray	5	139.2
TP7144	7 - 1"	55.0	Gray	5	131.9

Weatherproof outlet boxes

Round boxes

Applications:

- For use as a weatherproof junction box, device housing or as a lampholder mounting in damp or wet locations

Features:

- Durable die cast aluminum construction for long product life
- Powder paint finish for corrosive environments
- Pre-installed ground screw
- Tapered NPT hubs
- Boxes include mounting hardware and closure plugs
- Covers include gasket and mounting hardware

Certifications and compliances:

- UL File No. E-121488
- CSA C22.2 No. 18
- cULus
- Complies with NEC Article 406.9(B)(1)
- NEMA 3R



Standard materials:

- Boxes – die cast aluminum
- Gaskets – polyethylene foam



4" ROUND - 1-1/2" DEEP ^A

Cat. #	Outlet holes	Cubic inches	Color	Unit qty.	Wt. lbs. per 100
TP7146	5 - 1/2"	16.0	Gray	25	43.8
TP7148	5 - 1/2"	16.0	White	25	43.8
TP7149	5 - 1/2"	16.0	Bronze	25	43.8
TP7150	5 - 3/4"	16.0	Gray	25	44.8
TP7154	5 - 3/4"	16.0	White	25	44.8
TP7153	5 - 3/4"	16.0	Bronze	25	44.8

WITH BLANK PLATE ^B

Cat. #	Outlet holes	Cubic inches	Color	Unit qty.	Wt. lbs. per 100
TP7147	5 - 1/2"	16.0	Gray	24	67.4
TP7151	5 - 3/4"	16.0	Gray	24	68.4

4" ROUND BLANK PLATE COVERS ^B

Cat. #	Outlet holes	Cubic inches	Color	Unit qty.	Wt. lbs. per 100
TP7158	–	–	Gray	50	24.0
TP7159	–	–	White	50	24.0
TP7160	–	–	Bronze	50	24.0

^A UL Listed and CSA certified.

^B cULus Listed.

Weatherproof outlet boxes

Extensions and adapters

Applications:

- To provide weatherproof outlet boxes with additional capacity for larger wire fill requirements

Features:

- Durable die cast aluminum construction for long product life
- Powder paint finish for corrosive environments
- Tapered NPT hubs
- Includes gasket, mounting hardware and closure plugs

Certifications and compliances:

- UL File No. E-121488
- CSA C22.2 No. 18
- cULus
- Complies with NEC Article 406.9(B)(1)
- NEMA 3R



TP7120



TP7123



TP7152



TP7171



TP7172



TP7173



TP7177



TP7183



TP7258

SINGLE-GANG EXTENSION – 1" DEEP ^A

Cat. #	Outlet holes	Cubic inch capacity	Color	Unit qty.	Wt. lbs. per 100
TP7120	–	9.5	Gray	25	20.7

SINGLE-GANG EXTENSION ADAPTERS – 1-1/2" DEEP ^A

Cat. #	Outlet holes	Cubic inch capacity	Color	Unit qty.	Wt. lbs. per 100
TP7171	2 - 1/2"	9.5	Gray	6	40.9
TP7172	2 - 3/4"	11.0	Gray	6	36.0
TP7173	4 - 1/2"	9.5	Gray	25	40.1
TP7175	4 - 1/2"	9.5	Bronze	25	40.1
TP7176	4 - 1/2"	9.5	White	25	40.1
TP7174	4 - 3/4"	11.0	Gray	25	31.3
TP7177	6 - 1/2"	9.5	Gray	6	41.4
TP7183	6 - 3/4"	11.0	Gray	6	34.7

SINGLE-GANG FLANGED EXTENSION ADAPTERS – 1-1/2" DEEP ^B

Cat. #	Outlet holes	Cubic inch capacity	Color	Unit qty.	Wt. lbs. per 100
TP7258	4 - 1/2"	12.5	Gray	6	47.2

TWO-GANG EXTENSION – 1" DEEP ^C

Cat. #	Outlet holes	Cubic inch capacity	Color	Unit qty.	Wt. lbs. per 100
TP7123	–	16.0	Gray	10	26.7

4" ROUND BOX ADAPTER – 1-1/2" DEEP

Cat. #	Outlet holes	Cubic inches	Color	Unit qty.	Wt. lbs. per 100
TP7152 ^C	4 - 1/2"	16.5	Gray	25	41.6
TP7157 ^B	4 - 1/2"	16.5	White	25	38.0
TP7155 ^B	4 - 1/2"	16.5	Bronze	25	38.0

^A UL Listed and CSA certified.

^B cULus Listed.

^C UL Listed.

Weatherproof outlet covers

Single-gang

Applications:

- Used to provide weatherproof protection for outdoor receptacles

Features:

- Durable die cast aluminum construction for long product life
- Self-closing cover provides weatherproof protection when device not in use
- Powder paint finish for corrosive environments
- Includes gasket and hardware

Certifications and compliances:

- UL File No. E-121488
- CSA C22.2 No. 18
- Complies with NEC Article 406.9(B)(1)
- NEMA 3R



Standard materials:

- Covers – die cast aluminum
- Gaskets – polyethylene foam



TP7199



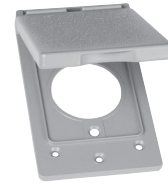
TP7200



TP7202



TP7206 - TP7209



TP7214



TP7218



TP7236 - TP7238



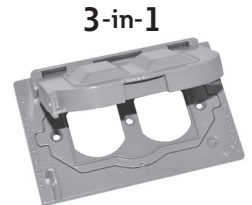
TP7240 - TP7242



TP7232



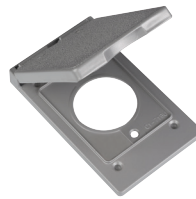
TP7285



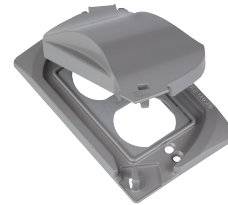
TP7239



TP7212



TP7217



TP7265

Weatherproof

Weatherproof outlet covers

Single-gang

Cat. #	Description	Color	Mounting orientation	Unit qty.	Wt. lbs. per 100
TP7199 ^A	Duplex	Gray	Vertical	50	29.3
TP7198 ^A	Duplex	White	Vertical	50	29.3
TP7197 ^A	Duplex	Bronze	Vertical	50	29.3
TP7200 ^B	GFCI, duplex, 1.38" round	Gray	Vertical	24	43.9
TP7201 ^B	GFCI, duplex, 1.38" round	White	Vertical	24	43.9
TP7205 ^B	GFCI, duplex, 1.38" round	Bronze	Vertical	24	43.9
TP7202 ^A	Single receptacle or switch, 1.425" round	Gray	Vertical	25	16.9
TP7203 ^A	Single receptacle or switch, 1.425" round	White	Vertical	25	16.9
TP7204 ^A	Single receptacle or switch, 1.425" round	Bronze	Vertical	25	16.9
TP7206 ^A	Duplex or combo switch	Natural	Horizontal	50	18.6
TP7207 ^A	Duplex or combo switch	Gray	Horizontal	50	19.2
TP7208 ^A	Duplex or combo switch	White	Horizontal	50	19.2
TP7209 ^A	Duplex or combo switch	Bronze	Horizontal	50	19.2
TP7214 ^A	Single receptacle or switch, 1.625" round	Gray	Vertical	25	30.4
TP7218 ^A	20/30/50A receptacle, 2.125" round	Gray	Vertical	25	28.6
TP7221 ^A	20/30/50A receptacle, 2.125" round	White	Vertical	25	28.6
TP7219 ^A	20/30/50A receptacle, 2.125" round	Bronze	Vertical	25	28.6
TP7232 ^A	Duplex, switch, combination device	Natural	Horizontal	50	17.9
TP7233 ^A	Duplex, switch, combination device	Gray	Horizontal	50	18.5
TP7236 ^A	GFCI	Gray	Horizontal	25	21.8
TP7237 ^A	GFCI	White	Horizontal	25	21.8
TP7238 ^A	GFCI	Bronze	Horizontal	25	21.8
TP7239 ^B	GFCI, duplex, 1.38" round	Gray	Horizontal	24	43.7
TP7245 ^B	GFCI, duplex, 1.38" round	White	Horizontal	24	43.7
TP7246 ^B	GFCI, duplex, 1.38" round	Bronze	Horizontal	24	43.7
TP7240 ^A	GFCI	Gray	Vertical	25	22.5
TP7241 ^A	GFCI	White	Vertical	25	22.5
TP7242 ^A	GFCI	Bronze	Vertical	25	22.5
TP7212 ^A	Single receptacle or switch, 1.425" round	Gray	Vertical	15	29.9
TP7217 ^A	Single receptacle or switch, 1.64" round	Gray	Vertical	15	30.0
TP7285 ^B	Duplex cover with receptacle	Gray	Horizontal	10	31.9
TP7286 ^B	Duplex cover with receptacle	White	Horizontal	10	31.9
TP7287 ^B	Duplex cover with receptacle	Bronze	Horizontal	10	31.9
TP7265 ^B	GFCI, duplex, 1.38" round	Gray	Vertical/horizontal	12	27.3
TP7267 ^B	GFCI, duplex, 1.38" round	White	Vertical/horizontal	12	27.3
TP7266 ^B	GFCI, duplex, 1.38" round	Bronze	Vertical/horizontal	12	27.3

^A UL Listed and CSA certified.

^B cULus Listed.

Weatherproof outlet covers

Two-gang

Applications:

- Used to provide weatherproof protection for outdoor receptacles

Features:

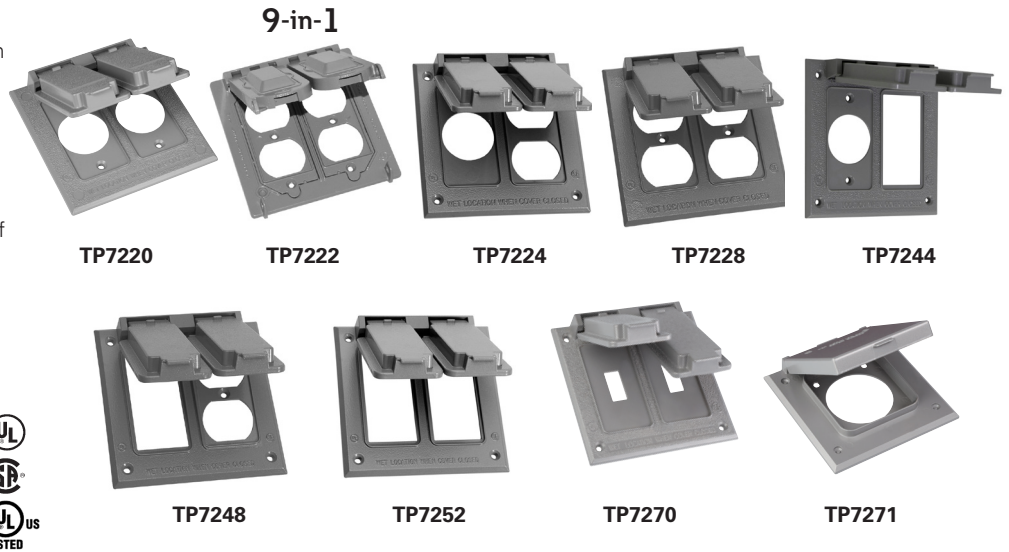
- Durable die cast aluminum construction for long product life
- Self-closing cover provides weatherproof protection when device not in use
- Powder paint finish for corrosive environments
- Includes gasket and hardware

Certifications and compliances:

- UL File No. E-121488
- CSA C22.2 No. 18
- cULus
- Complies with NEC Article 406.9(B)(1)
- NEMA 3R

Standard materials:

- Covers – die cast aluminum
- Gaskets – polyethylene foam



Cat. #	Description	Color	Unit qty.	Wt. lbs. per 100
TP7220 ^A	Two single receptacles and/or switches, 1.406" round	Gray	10	62.7
TP7222 ^B	Multi-use, two GFCI, duplex or 1.375" round or combination	Gray	8	67.9
TP7224 ^A	One single receptacle or switch (1.406" dia.) and one duplex, switch or combination device	Gray	10	60.2
TP7228 ^A	Two duplex, switch or combination device	Gray	10	60.3
TP7229 ^A	Two duplex, switch or combination device	White	10	60.3
TP7230 ^A	Two duplex, switch or combination device	Bronze	10	60.3
TP7244 ^C	Vertical GFCI and one single switch or receptacle	Gray	10	61.5
TP7248 ^A	Vertical GFCI and one duplex, switch or combination device	Gray	10	59.4
TP7249 ^A	Vertical GFCI and one duplex, switch or combination device	White	10	59.4
TP7250 ^A	Vertical GFCI and one duplex, switch or combination device	Bronze	10	59.4
TP7252 ^A	Two GFCI	Gray	10	58.4
TP7270 ^A	Two vertical switches	Gray	25	64.5
TP7271 ^C	20/30/50A receptacle, 2.125" round	Gray	8	60.2

^A UL Listed and CSA certified.

^B cULus Listed.

^C UL Listed.

Weatherproof outlet covers

Single-gang and two-gang toggle switch

Applications:

- Used to provide weatherproof protection for an outdoor switch

Features:

- Durable die cast aluminum construction for long product life
- Powder paint finish for corrosive environments
- Includes gasket and hardware

Certifications and compliances:

- UL File No. E-121488
- CSA C22.2 No. 18
- cULus
- Complies with NEC Article 406.9(B)(1)
- NEMA 3R



Standard materials:

- Covers – die cast aluminum
- Gaskets – polyethylene foam



TP7260
5/8" thick

TP7277

TP7278

TP7275

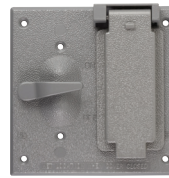
TP7280

SINGLE-GANG

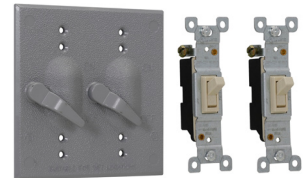
Cat. #	Description	Color	Unit qty.	Wt. lbs. per 100
TP7260 ^B	Toggle switch cover with SP 125V 15A switch	Gray	50	26.8
TP7261 ^B	Toggle switch cover with SP 125V 15A switch	White	50	26.8
TP7262 ^B	Toggle switch cover with SP 125V 15A switch	Bronze	50	26.8
TP7280 ^A	Extended switch cover (for use with commercial and residential grade switch)	Gray	50	17.7
TP7281 ^A	Extended switch cover (for use with commercial and residential grade switch)	White	50	17.7
TP7282 ^A	Extended switch cover (for use with commercial and residential grade switch)	Bronze	50	17.7
TP7277 ^B	Toggle switch cover with SP 125V 20A switch	Gray	50	28.7
TP7278 ^B	Toggle switch cover with DP 125V 20A switch	Gray	50	28.3
TP7275 ^B	Toggle switch cover with 3-way 125V 15A switch	Gray	50	28.8



TP7268



TP7269



TP7272

TWO-GANG

Cat. #	Description	Color	Unit qty.	Wt. lbs. per 100
TP7268 ^C	Toggle switch cover	Gray	10	34.3
TP7269 ^A	Vertical GFCI, toggle switch	Gray	8	47.0
TP7272 ^B	Toggle switch cover with (2) SP 125V 15A switches	Gray	10	51.8

^A UL Listed and CSA certified.

^B cULus Listed.

^C UL Listed.

Weatherproof outlet covers

Blank steel and lampholder

Applications:

- Lampholder covers provide a mounting location for single-gang or 4" round weatherproof outlet box
- Blank steel covers provide weatherproof protection when box is not in use

Features:

Lampholder cover:

- Durable die cast aluminum construction for long product life
- Provide mounting for lampholders and accessories
- Powder paint finish for corrosive environments
- Two- and three-hole covers include two closure plugs
- Includes gasket and hardware

Blank cover:

- Stamped steel
- Includes gasket and hardware

Certifications and compliances:



- cULus File Nos. E-121488, E163827
- Complies with NEC Article 406.9(B)(1)
- NEMA 3R

Standard materials:

- Blank covers – steel
- Lampholder covers – die cast aluminum



TP7292 - TP7294



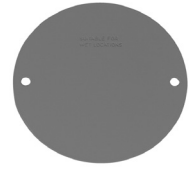
TP7291



TP7296 - TP7298



TP7295



TP7158 - TP7160

BLANK STEEL

Cat. #	Description	Outlet holes	Color	Unit qty.	Wt. lbs. per 100
TP7292	Single-gang	–	Gray	100	14.0
TP7293	Single-gang	–	White	100	14.0
TP7294	Single-gang	–	Bronze	100	14.0
TP7291	Single-gang (box mount)	–	Gray	20	14.4
TP7296	Two-gang	–	Gray	50	22.6
TP7297	Two-gang	–	White	50	22.6
TP7298	Two-gang	–	Bronze	50	22.6
TP7295	Three-gang	–	Gray	25	31.6
TP7158	4" round	–	Gray	50	24.0
TP7159	4" round	–	White	50	24.0
TP7160	4" round	–	Bronze	50	24.0



TP7300 - TP7302



TP7304



TP7308 - TP7310



TP7312 - TP7314



TP7320 - TP7322

LAMPHOLDER

Cat. #	Description	Outlet holes	Color	Unit qty.	Wt. lbs. per 100
TP7300	4" round	1 - 1/2"	Gray	25	12.0
TP7301	4" round	1 - 1/2"	White	25	12.0
TP7302	4" round	1 - 1/2"	Bronze	25	12.0
TP7304	4" round	2 - 1/2"	Gray	25	15.7
TP7305	4" round	2 - 1/2"	White	25	15.7
TP7306	4" round	2 - 1/2"	Bronze	25	15.7
TP7308	4" round	3 - 1/2"	Gray	25	15.4
TP7309	4" round	3 - 1/2"	White	25	15.4
TP7310	4" round	3 - 1/2"	Bronze	25	15.4
TP7312	Rectangular	1 - 1/2"	Gray	25	11.5
TP7313	Rectangular	1 - 1/2"	White	25	11.5
TP7314	Rectangular	1 - 1/2"	Bronze	25	11.5
TP7316	Rectangular	2 - 1/2"	Gray	25	14.5
TP7317	Rectangular	2 - 1/2"	White	25	14.5
TP7318	Rectangular	2 - 1/2"	Bronze	25	14.5
TP7320	Rectangular	3 - 1/2"	Gray	25	14.7
TP7321	Rectangular	3 - 1/2"	White	25	14.7
TP7322	Rectangular	3 - 1/2"	Bronze	25	14.7

Weatherproof

Receptacle/cover combinations and complete kits

Applications:

- Receptacle kits are used to provide weatherproof protection for included devices

Features:

- Suitable for use in wet locations when cover is closed
- Durable die cast aluminum construction for long product life
- Complete kits offer universal mounting
- Powder paint finish for corrosive environments
- Includes gasket, hardware and closure plugs

Certifications and compliances:

- cULus File No. E-324138
- Complies with NEC Article 406.9(B)(1)
- NEMA 3R



Standard materials:

- Outlet boxes and covers – die cast aluminum
- Gaskets – polyethylene foam



TP7279



TP7400



TP7404

Cat. #	Description	Outlet holes	Box depth	Mounting orientation	Color	Unit qty.	Wt. lbs. per 100
TP7279	Single-gang multi-use cover with SP 125V 15A switch (mounting ears removed)	–	–	Vertical	Gray	8	26.8
TP7400	Single-gang box, universal cover, 15A TRWR duplex receptacle	3 - 1/2"	2"	Vertical/horizontal	Gray	6	85.6
TP7401	Single-gang box, universal cover, 15A TRWR duplex receptacle	3 - 1/2"	2"	Vertical/horizontal	White	4	85.6
TP7402	Single-gang box, universal cover, 15A TRWR duplex receptacle	3 - 1/2"	2"	Vertical/horizontal	Bronze	6	85.6
TP7403	Single-gang box, universal cover, 15A TRWR duplex receptacle	3 - 1/2"	2"	Vertical/horizontal	Black	6	85.6
TP7404	Single-gang box, universal cover, 15A TRWR GFCI receptacle	3 - 1/2"	2"	Vertical/horizontal	Gray	6	97.2
TP7405	Single-gang box, universal cover, 15A TRWR GFCI receptacle	3 - 1/2"	2"	Vertical/horizontal	White	6	97.2
TP7406	Single-gang box, universal cover, 15A TRWR GFCI receptacle	3 - 1/2"	2"	Vertical/horizontal	Bronze	6	97.2

Extra duty non-metallic while-in-use covers

Eaton exclusive

Applications:

- Designed to provide weatherproof protection while an outlet is in use

Features:

- Corrosion-resistant, non-conductive UV-rated polycarbonate for long outdoor life
- Corner ball joint hinge for true universal mounting capability
- No disassembly required for vertical or horizontal mounting orientation
- Adapters for decorator and GFCI devices, duplex receptacles, switches and round receptacles
- Keyhole provision for easy mounting
- Pre-installed gasket, mounting hardware and installation instructions included
- Easy to close lockable cover

Certifications and compliances:

- cULus – File Nos. E102328 & E15022
- cCSAus
- Complies with NEC Article 406.9(B)(1)
- NEMA 3R



Standard materials:

- Body and cover – polycarbonate
- Gaskets – polyethylene foam



WIU1T1



WIU1G1



WIU1DT1



WIU1DG1



WIU2DT1



WIU2DG1

16:1 single-gang configurations



1-1/4" – 2-1/8"

55:1 double-gang configurations



1-1/4" – 2-1/2"

1-1/4" – 1-3/4"

1-1/4" – 1-3/4"

Cat. #	Gang	Description	Mounting	Color	Depth	Unit qty.	Wt. lbs. per 100
WIU1T1	1	Extra duty, 16:1	Horizontal/vertical	Transparent gray	2.25"	6	31.7
WIU1G1	1	Extra duty, 16:1	Horizontal/vertical	Gray	2.25"	6	31.7
WIU1W1	1	Extra duty, 16:1	Horizontal/vertical	White	2.25"	6	31.7
WIU1B1	1	Extra duty, 16:1	Horizontal/vertical	Bronze	2.25"	6	31.7
WIU1DT1	1	Extra duty, 16:1	Horizontal/vertical	Transparent gray	3.125"	5	36.1
WIU1DG1	1	Extra duty, 16:1	Horizontal/vertical	Gray	3.125"	5	36.1
WIU1DW1	1	Extra duty, 16:1	Horizontal/vertical	White	3.125"	5	36.1
WIU1DB1	1	Extra duty, 16:1	Horizontal/vertical	Bronze	3.125"	5	36.1
WIU2DT1	2	Extra duty, 55:1	Vertical	Transparent gray	3.125"	3	47.8
WIU2DG1	2	Extra duty, 55:1	Vertical	Gray	3.125"	3	47.8
WIU2DW1	2	Extra duty, 55:1	Vertical	White	3.125"	3	47.8
WIU2DB1	2	Extra duty, 55:1	Vertical	Bronze	3.125"	3	47.8

Weatherproof

Extra duty metallic while-in-use covers

Eaton exclusive

Applications:

- Designed to provide weatherproof protection while an outlet is in use

Features:

- Durable die cast, powder coated aluminum construction
- Corner ball joint hinge for true universal mounting capability
- No disassembly required for vertical or horizontal mounting orientation
- Adapters for decorator and GFCI devices, duplex receptacles, switches and round receptacles
- Keyhole provision for easy mounting
- Pre-installed gasket, mounting hardware and installation instructions included
- Easy to close lockable cover

Certifications and compliances:

- cULus – File Nos. E102328 & E15022
- cCSAus
- Complies with NEC Article 406.9(B)(1)
- NEMA 3R



WIUM1B1



WIUM1DG1



WIUM2DG1

16:1 single-gang configurations



1-1/4" – 2-1/8"

55:1 double-gang configurations



1-1/4" – 2-1/2"

1-1/4" – 1-3/4"

1-1/4" – 1-3/4"

Cat. #	Gang	Description	Mounting	Color	Depth	Unit qty.	Wt. lbs. per 100
WIUM1G1	1	Extra duty, 16:1	Horizontal/vertical	Gray	2.25"	6	60.0
WIUM1W1	1	Extra duty, 16:1	Horizontal/vertical	White	2.25"	6	60.0
WIUM1B1	1	Extra duty, 16:1	Horizontal/vertical	Bronze	2.25"	6	60.0
WIUM1DG1	1	Extra duty, 16:1	Horizontal/vertical	Gray	3.125"	5	70.5
WIUM1DW1	1	Extra duty, 16:1	Horizontal/vertical	White	3.125"	5	70.5
WIUM1DB1	1	Extra duty, 16:1	Horizontal/vertical	Bronze	3.125"	5	70.5
WIUM2DG1	2	Extra duty, 55:1	Vertical	Gray	3.125"	3	84.6
WIUM2DW1	2	Extra duty, 55:1	Vertical	White	3.125"	3	84.6
WIUM2DB1	2	Extra duty, 55:1	Vertical	Bronze	3.125"	3	84.6

Weatherproof

Extra duty low profile while-in-use covers

Applications:

- Low profile design that provides weatherproof protection while an outlet is in use and the cover is closed

Features:

- Corrosion-resistant, non-conductive UV-rated polycarbonate for long outdoor life
- Horizontal and vertical mounting options
- No cord bending inside the cover
- Adapters for duplex and GFCI receptacles included
- Rated for 15A
- Easy to close lockable cover
- Pre-installed gasket, mounting hardware and installation instructions included

Certifications and compliances:

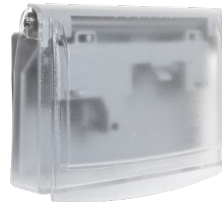
- cCSAus
- Complies with NEC Article 406.9(B)(1)
- NEMA 3R



WIUS1VW1



WIUS1VG1



WIUS1HT1



WIUS1HG1

Standard materials:

- Body and cover – polycarbonate
- Gaskets – polyethylene foam

Cat. #	Gang	Description	Mounting	Color	Depth	Unit qty.	Wt. lbs. per 100
WIUS1VT1	1	Extra duty, low profile	Vertical	Transparent gray	1.562"	6	45.2
WIUS1VG1	1	Extra duty, low profile	Vertical	Gray	1.562"	6	45.2
WIUS1VW1	1	Extra duty, low profile	Vertical	White	1.562"	6	45.2
WIUS1HT1	1	Extra duty, low profile	Horizontal	Transparent gray	1.562"	5	58.2
WIUS1HG1	1	Extra duty, low profile	Horizontal	Gray	1.562"	5	58.2
WIUS1HW1	1	Extra duty, low profile	Horizontal	White	1.562"	5	58.2

Weatherproof

Extra duty while-in-use kits

Eaton exclusive

Applications:

- While-in-use cover kits are used to provide weatherproof protection for included devices

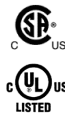
Features:

- Kits include single-gang outlet box, in-use cover and 15A TRWR GFCI device
- Corner ball joint hinge for true universal mounting capability
- Includes pre-installed gasket, mounting hardware and closure plugs
- Easy to close lockable cover



Certifications and compliances:

- cULus – File No. E324733
- cCSAus
- Complies with NEC Article 406.9(B)(1)
- NEMA 3R



Standard materials:

- Outlet boxes – die cast aluminum
- Metallic covers – die cast aluminum
- Non-metallic covers – polycarbonate
- Gaskets – polyethylene foam

NON-METALLIC IN-USE COVER KITS

Cat. #	Description	Mounting	Color	Outlet holes	Box depth	Unit qty.	Wt. lbs. per 100
WIUKGFC1	Single-gang box and in-use cover, 15A TRWR GFCI receptacle	Horizontal/vertical	Transparent gray	3 - 1/2"	3 - 1/8"	4	108.9
WIUKGFG1	Single-gang box and in-use cover, 15A TRWR GFCI receptacle	Horizontal/vertical	Gray	3 - 1/2"	3 - 1/8"	4	108.9

METALLIC IN-USE COVER KIT

Cat. #	Description	Mounting	Color	Outlet holes	Box depth	Unit qty.	Wt. lbs. per 100
WIUKMGFG1	Single-gang box and in-use cover, 15A TRWR GFCI receptacle	Horizontal/vertical	Gray	3 - 1/2"	3 - 1/8"	4	140.2

Weatherproof

Weatherproof LED

Applications:

- LED weatherproof luminaires combine the energy efficiency of LED technology with rugged weatherproof construction to provide a versatile residential or commercial outdoor lighting solution

Features:

- Durable die cast aluminum construction for long product life
- Tool-free adjustable head lamps
- Powder paint finish for corrosive environments
- 3000K warm white color
- Voltage – 120/277V
- Long life, up to 12 years
- Closure plugs, gasket and hardware included
- Suitable for wet locations

Certifications and compliances:



- cULus Listed
- UL File Nos. E470512 and E514227

Standard materials:

- Luminaire housing – die cast aluminum
- Lens – polycarbonate

Standard finish:

- Painted powder coat



TPLEDSL7G



TPLED12G



TPLEDK24G

SINGLE LUMINAIRES

Cat. #	Description	Lumens	Color	Size / outlet holes	Unit qty.	Wt. lbs. per 100
TPLED12G	(1) 12W LED lampholder	1,000	Gray	1/2"	4	155.0
TPLED12W	(1) 12W LED lampholder	1,000	White	1/2"	4	155.0
TPLED12B	(1) 12W LED lampholder	1,000	Bronze	1/2"	4	155.0

KITS

Cat. #	Description	Lumens	Color	Size / outlet holes	Unit qty.	Wt. lbs. per 100
TPLEDK24G	(2) 12W LED lights, 4" round box and cover	2,000	Gray	5 - 1/2"	2	252.9
TPLEDK24W	(2) 12W LED lights, 4" round box and cover	2,000	White	5 - 1/2"	2	252.9
TPLEDK24BR	(2) 12W LED lights, 4" round box and cover	2,000	Bronze	5 - 1/2"	2	252.9
TPLEDK24BK	(2) 12W LED lights, 4" round box and cover	2,000	Black	5 - 1/2"	2	252.9

SPIKE LIGHTS

Cat. #	Description	Lumens	Color	Size / outlet holes	Unit qty.	Wt. lbs. per 100
TPLEDSL7G	(1) 7W LED spike light	500	Gray	–	6	97.9
TPLEDSL7W	(1) 7W LED spike light	500	White	–	6	97.9
TPLEDSL7B	(1) 7W LED spike light	500	Bronze	–	6	97.9

Weatherproof

Lampholders and accessories

Applications:

- For use in outdoor lighting applications

Features:

- Durable die cast construction
- Adjustable lampholders
- For use with Par38 bulb (150W maximum)
- Includes installation hardware, gasket, closure plugs and instructions

Certifications and compliances:

- UL File No. E195204
- CSA C22.2 No. 250.0-08
- cULus

Standard material:

- Die cast aluminum



TP7162 - TP7165



TP7166



TP7178



TP7186



TP7188 (aluminum)

Cat. #	Description	Color	Unit qty.	Wt. lbs. per 100
TP7162 A U	Universal par lampholder	Natural	36	30.6
TP7163 A U	Universal par lampholder	Gray	36	30.9
TP7164 A U	Universal par lampholder	White	36	30.9
TP7165 A U	Universal par lampholder	Bronze	36	30.9
TP7166 A U	Universal par lampholder with external gasket	Gray	36	33.6
TP7170	External gasket only	Black	100	4.8
TP7178 B U	Universal par lampholder with reflector	Gray	6	41.8
TP7186 B	Portable par lampholder with 6' cord	Gray	12	73.5
TP7188	2-1/2" outside dia. pole fitter with 1/2" male thread	Gray	24	57.6

A UL Listed and CSA certified.

B cULus Listed.

U Third party certified for use with CFL and LED lamps.

Motion sensors

Applications:

- For use with LED or standard lighting kits in outdoor applications

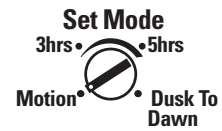
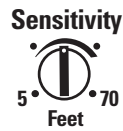
Features:

- Motion detection with Passive Infrared Technology (PIR)
- Set for motion detection or dusk to dawn
- 240 degree field of view
- Adjustable sensitivity from 5 to 70 feet
- Selectable ON time (Test, 1, 5 or 20 minutes)



Certifications and compliances:

- cULus Listed
- UL File No. E-464470



Standard material:

- Non-metallic

Cat. #	Description	Color	Unit qty.	Wt. lbs. per 100
WPMSG	MOTION SENSOR GRY	Gray	2	33.1
WPMSBR	MOTION SENSOR BZ	Bronze	2	33.1
WPMSW	MOTION SENSOR WHT	White	2	33.1

Weatherproof

Lampholder combinations

Applications:

- For use in outdoor lighting applications with single-gang rectangular or 4" round weatherproof box

Features:

- Durable die cast construction
- Adjustable lampholders
- For use with Par38 bulb (150W maximum)
- Certified for use with CFL and LED lamps
- Includes installation hardware, gasket, closure plugs and instructions

Certifications and compliances:

- cULus
- UL File No. E195204



Standard material:

- Die cast aluminum



TP7325



TP7334

RECTANGULAR COVER COMBINATIONS

Cat. #	Description	Outlet holes	Color	Unit qty.	Wt. lbs. per 100
TP7325	(1) par lampholder	1 - 1/2"	Gray	8	42.1
TP7334	(2) par lampholder	3 - 1/2"	Gray	8	76.2
TP7335	(2) par lampholder	3 - 1/2"	White	8	76.2
TP7333	(2) par lampholder	3 - 1/2"	Bronze	8	76.2



TP7328



TP7330 - TP7332

4" ROUND COVER COMBINATIONS

Cat. #	Description	Outlet holes	Color	Unit qty.	Wt. lbs. per 100
TP7328	(1) par lampholder	1 - 1/2"	Gray	8	42.6
TP7329	(1) par lampholder	1 - 1/2"	White	8	42.6
TP7327	(1) par lampholder	1 - 1/2"	Bronze	8	42.6
TP7330	(2) par lampholder	3 - 1/2"	Gray	10	81.4
TP7331	(2) par lampholder	3 - 1/2"	White	10	81.4
TP7332	(2) par lampholder	3 - 1/2"	Bronze	10	81.4

Weatherproof

Lampholder kits

Applications:

- For use in outdoor lighting applications

Features:

- Ready to install lighting kit
- Durable die cast construction
- Adjustable lampholders
- For use with Par38 bulb (150W maximum)
- Certified for use with CFL and LED lamps
- Includes installation hardware, gasket, closure plugs and instructions



TP7340



TP7345

Cat. #	Description	Outlet holes	Color	Unit qty.	Wt. lbs. per 100
TP7340	Box, cover, (2) lampholders	2 - 1/2"	Gray	4	129.0
TP7345	Box, cover, photocell, (2) lampholders	2 - 1/2"	Gray	4	163.4
TP7346	Box, cover, photocell, (2) lampholders	2 - 1/2"	White	4	163.4

Certifications and compliances:

- cULus
- UL File No. E195204



Standard material:

- Die cast aluminum

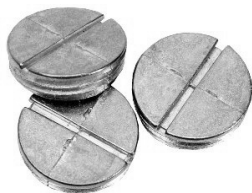
Weatherproof

Weatherproof accessories

CLOSURE PLUGS

Applications:

- For use with all weatherproof boxes, adapters and lampholder/combination covers to seal unused outlets



Certifications and compliances:



- cULus
- UL File No. E121487

Standard materials:

- Zinc die cast or polycarbonate

Cat. #	Description	Material	Color	Unit qty.	Wt. lbs. per 100
TP7940	1/2"	Zinc	Gray	100	1.2
TP7941	1/2"	Plastic	White	100	0.3
TP7942	1/2"	Plastic	Bronze	100	0.3
TP7944	3/4"	Zinc	Gray	50	1.8
TP7945	3/4"	Plastic	White	50	0.4
TP7946	3/4"	Plastic	Bronze	50	0.4
TP7948	1"	Zinc	Gray	50	2.8

REPLACEMENT GASKETS

Applications:

- For weatherproof boxes and covers
- Single- and two-gang gaskets can accommodate duplex, GFCI, round and switch devices



TPG1



TPG2



TRPG1

Standard material:

- Polyethylene foam

Cat. #	Description	Color	Unit qty.	Wt. lbs. per 100
TPG1	(2) single-gang	Black	20	0.4
TPG2	(2) two-gang	Black	20	0.7
TRPG1	(2) 4" round	Black	50	0.3

WEATHERPROOF MOUNTING HARDWARE KIT

Cat. #	Description	Unit qty.	Wt. lbs. per 100
WPMH1	Lugs and mounting screws	1	1.2



WPMH1