

Myers hubs

HUB BASIC SCRU-TITE – NEMA 2, 3, 3R, 4, 4X, 12

Zinc

UL File No. E-27258



Cat. #	Size	Unit qty.	Wt. lbs. per 100
ST 03	3/8"	25	11
ST 1	1/2"	25	19
ST 2	3/4"	25	27
ST 3	1"	25	40
ST 4	1 1/4"	10	51
ST 5	1 1/2"	10	68
ST 6	2"	10	92
ST 7	2 1/2"	5	210
ST 8	3"	2	245
ST 9	3 1/2"	2	278
ST 10	4"	2	318
ST 11	5"	1	478
ST 12	6"	1	685

Optional nickel-chrome plate finish. Add suffix -CP.
 Not supplied with insulator.

Conduit hubs

HUB BASIC SCRU-TITE – NEMA 2, 3, 3R, 4, 4X, 12

Aluminum

UL File No. E-27258



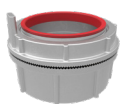
Cat. #	Size	Unit qty.	Wt. lbs. per 100
STA 1	1/2"	25	8
STA 2	3/4"	25	11
STA 3	1"	25	17
STA 4	1 1/4"	10	30
STA 5	1 1/2"	10	30
STA 6	2"	10	38
STA 7	2 1/2"	5	80
STA 8	3"	2	100
STA 9	3 1/2"	2	138
STA 10	4"	2	150
STA 11	5"	1	300
STA 12	6"	1	300

Not supplied with insulator.

GROUND HUB – NEMA 2, 3, 3R, 4, 4X, 12

316 Stainless steel

UL File No. E-59509



Cat. #	Size	Unit qty.	Wt. lbs. per 100
SSTG 1	1/2"	10	29
SSTG 2	3/4"	10	41
SSTG 3	1"	10	57
SSTG 4	1 1/4"	5	73
SSTG 5	1 1/2"	5	99
SSTG 6	2"	5	134
SST 7	2 1/2"	2	183
SST 8	3"	2	278
SST 9	3 1/2"	2	328
SST 10	4"	2	395

Not UL Listed as means of grounding and bonding. Does not include tapped ground tab or ground screw.

GROUND HUB – NEMA 2, 3, 3R, 4, 4X, 12

Zinc

UL File No. E-59509



Cat. #	Size	Unit qty.	Wt. lbs. per 100	Max. Copper Grd. Wire Size	
				CSA	UL
STG 1	1/2"	25	20	#8	#8
STG 2	3/4"	25	28	#8	#8
STG 3	1"	25	42	#8	#8
STG 4	1 1/4"	10	55	#8	#8
STG 5	1 1/2"	10	70	#6	#8
STG 6	2"	10	95	#4	#8
STG 7	2 1/2"	5	190	#2	#6
STG 8	3"	2	243	1/0	#6
STG 9	3 1/2"	2	300	2/0	#6
STG 10	4"	2	323	2/0	#4
STG 11	5"	1	625	2/0	#2
STG 12	6"	1	750	3/0	#1

Not supplied with insulator.
 Use of wire terminal is required by CSA and recommended by UL for wire gauges over 10 AWG.

GROUND HUB – NEMA 2, 3, 3R, 4, 4X, 12

Aluminum

UL File No. E-59509



Cat. #	Size	Unit qty.	Wt. lbs. per 100	Max. Copper Grd. Wire Size	
				CSA	UL
STAG 1	1/2"	25	13	#8	#8
STAG 2	3/4"	25	14	#8	#8
STAG 3	1"	25	18	#8	#8
STAG 4	1 1/4"	10	25	#8	#8
STAG 5	1 1/2"	10	33	#6	#8
STAG 6	2"	10	41	#4	#8
STAG 7	2 1/2"	5	90	#2	#6
STAG 8	3"	2	103	1/0	#6
STAG 9	3 1/2"	2	138	2/0	#6
STAG 10	4"	2	140	2/0	#4
STAG 11	5"	1	325	3/0	#2
STAG 12	6"	1	350	3/0	#1

Not supplied with insulator.
 Use of wire terminal is required by CSA and recommended by UL for wire gauges over 10 AWG.